

CloudEngine 1800V Virtual Switch



CloudEngine 1800V Virtual Switch

Product Overview

Huawei CloudEngine 1800V (CE1800V) is a distributed Virtual Switch (vSwitch) designed by Huawei for data center virtualization environments. Supporting an abundance of functionality, the CE1800V is open, easy-to-manage, and compatible with the virtualization platforms of VMware and Microsoft, as well as other open-source virtualization platforms. Through Huawei's close cooperation with VMware and Microsoft, the CE1800V can run on the virtualization platforms of VMware and Microsoft, delivering a strong distributed, virtual switching capability for Virtual Machines (VMs). In addition, the CE1800V can work with Huawei's CE series hardware switches and Agile Controller to provide a complete network virtualization solution for customers.

Product Highlights

Providing a Powerful Virtualization Capability

- Supporting network-wide virtualization solutions: The CE1800V extends the network management and control granularity to the interior of servers. It supports full-path network virtualization solutions by managing VM traffic in a fine-grained manner.
- Flexibly adapting to Software-Defined Networking (SDN) architecture: The CE1800V supports processing multi-level OpenFlow flow tables. Working as the starting and end points of a Virtual Extensible LAN (VXLAN) tunnel, the CE1800V encapsulates and decapsulates VXLAN packets that enter and exit a VM. In this way, VM deployment does not depend on physical network devices. As a result, differences among physical networks are shielded, and service requirements on physical networks are lowered. Therefore, the CE1800V fully adapts to the SDN architecture.
- Supporting smooth multi-tenant migration: By leveraging the VXLAN to extend traditional VLANs, the CE1800V supports a tenant network that has up to one million tenants. Additionally, the CE1800V is able to isolate tenants into different subnets, and supports flexible VM migration across Layer 3.

Supporting Standard NBIs

- Supporting the OpenFlow protocol: The CE1800V supports the standard OpenFlow 1.0/1.3 protocol that serves as a Northbound Interface (NBI) protocol. It also supports a variety of standard SDN controllers, and separates the control plane from the forwarding plane in the SDN architecture.
- Supporting the OVSDB protocol: The CE1800V supports the OVSDB protocol that serves as a northbound management interface protocol, and provides independent configuration channels. Standard SDN controllers can manage and configure the CE1800V using the OVSDB protocol.

Supporting Multiple Virtualization Platforms

- The CE1800V features good compatibility. It can run on multiple mainstream virtualization platforms in the industry, such as VMware ESXi, Microsoft Hyper-V, and KVM. By shielding the implementation differences among different virtualization platforms, the CE1800V makes network Operations and

Maintenance (O&M) and development of new services easier than ever before. Based on its support for multiple virtualization platforms, the CE1800V can forward and process inter-VM data traffic in a highly efficient fashion.

Centralized Network Control and Management

- Controlling virtual networks in the way physical networks are controlled: Through Huawei's Agile Controller, network administrators can centrally control the CE1800V and physical network devices (for example, CE series hardware switches), and complete multiple functions such as delivering OpenFlow flow tables and guiding traffic forwarding, implementing separation of the control plane from the forwarding plane.
- Managing virtual networks in the way physical networks are managed: By using Huawei's unified network O&M and management tool – eSight Network Management System (NMS), network administrators can centrally manage and monitor the CE1800V and physical network devices (for example, CE series hardware switches), and complete multiple functions such as automatic version upgrades.

Product Specifications

Item	CE1800V
SDN	OpenFlow1.0
	OpenFlow1.3
	OVSDB
Overlay	VXLAN
	VNI: 30K
Layer 2 forwarding	VLAN: 4,094
	MAC: 8,192
	LAG members: 8
Multicast	Broadcasting multicast packets in a VLAN
Management and maintenance	SPAN
	RSPAN
	ERSPAN
Link	LACP LAG
IPv4	IPv4 packet forwarding
	Encapsulating IPv4 headers in VXLAN headers
IPv6	IPv6 packet forwarding
Security group	Security group capability based on iptables

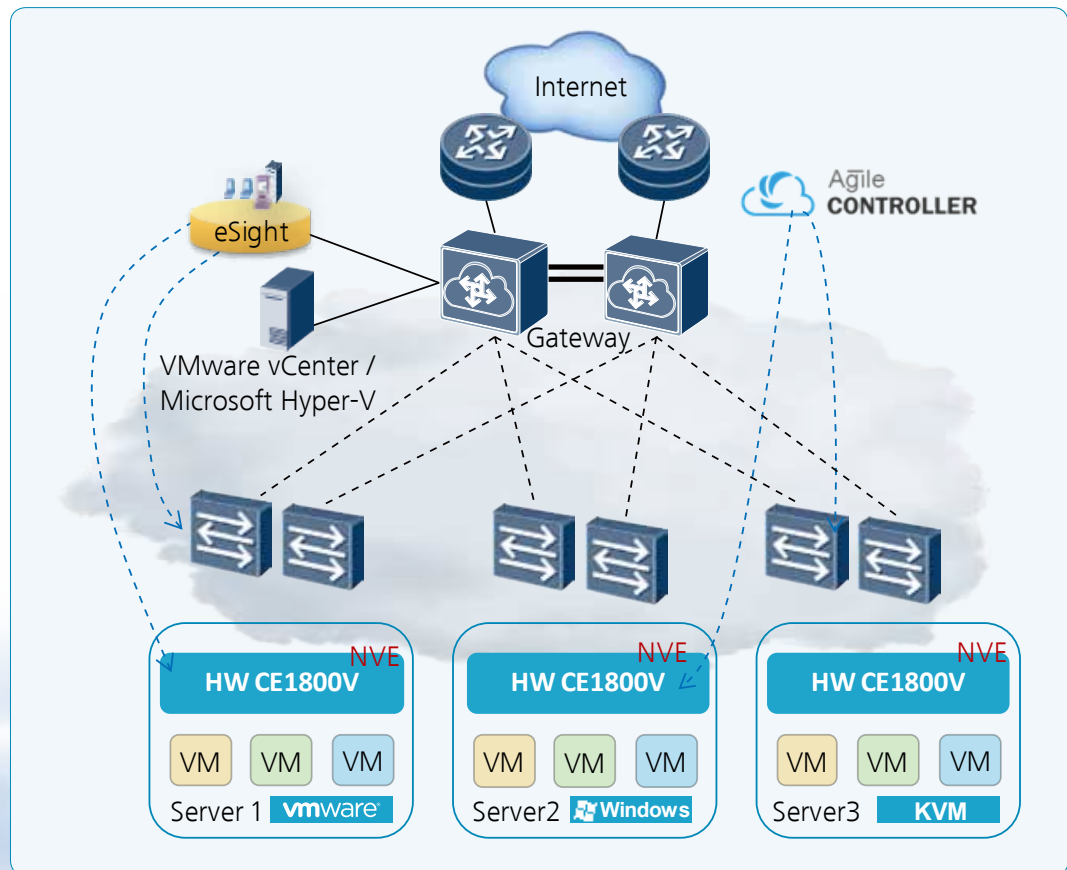
Ordering Information

Item	Description	Remarks	
CE18-LIC-B11-V	CE1800V basic software–VMware platform	Mandatory; customers configure the corresponding basic software based on different server virtualization platforms.	
CE18-LIC-B11-K	CE1800V basic software–KVM platform		
CE18-LIC-B11-H	CE1800V basic software – Hyper-V platform		
CE18-LIC-1C	CE1800V License, managing 1CPU	Mandatory; customers select the corresponding license based on the CPU capability of CE1800V's operating environment.	
CE18-LIC-2C	CE1800V License, managing 2CPUs		
CE18-LIC-4C	CE1800V License, managing 4CPUs		
CE18-LIC-8C	CE1800V License, managing 8CPUs		
CE18-LIC-16C	CE1800V License, managing 16CPUs		
CE18-LIC-32C	CE1800V License, managing 32CPUs		
CE18-LIC-64C	CE1800V License, managing 64CPUs		
CE18-1C-SNS1Y	CE1800V: 1CPU;SnS–1 year		Mandatory; customers select the subscription and support (SnS) based on the CPU license they have selected and the SnS service period.
CE18-1C-SNS3Y	CE1800V: 1CPU;SnS–3 years		
CE18-1C-SNS5Y	CE1800V: 1CPU;SnS–5 years		
CE18-2C-SNS1Y	CE1800V: 2 CPUs;SnS–1 year		
CE18-2C-SNS3Y	CE1800V: 2 CPUs;SnS–3 years		
CE18-2C-SNS5Y	CE1800V: 2 CPUs;SnS–5 years		
CE18-4C-SNS1Y	CE1800V: 4 CPUs;SnS–1 year		
CE18-4C-SNS3Y	CE1800V: 4 CPUs;SnS–3 years		
CE18-4C-SNS5Y	CE1800V: 4 CPUs;SnS–5 years		
CE18-8C-SNS1Y	CE1800V: 8 CPUs;SnS– 1 year		
CE18-8C-SNS3Y	CE1800V: 8 CPUs;SnS– 3 years		
CE18-8C-SNS5Y	CE1800V: 8 CPUs;SnS–5 years		
CE18-16C-SNS1Y	CE1800V: 16 CPUs;SnS– 1 year		
CE18-16C-SNS3Y	CE1800V: 16 CPUs;SnS– 3 years		
CE18-16C-SNS5Y	CE1800V: 16 CPUs;SnS–5 years		
CE18-32C-SNS1Y	CE1800V: 32 CPUs;SnS– 1 year		
CE18-32C-SNS3Y	CE1800V:32 CPUs;SnS– 3 years		
CE18-32C-SNS5Y	CE1800V:32 CPUs;SnS–5 years		
CE18-64C-SNS1Y	CE1800V:64 CPUs;SnS– 1 year		
CE18-64C-SNS3Y	CE1800V:64 CPUs;SnS– 3 years		
CE18-64C-SNS5Y	CE1800V:64 CPUs;SnS–5 years		

Networking Application

Huawei CE1800V is able to control and manage network traffic in virtualization environments of data centers that are deployed with the Hypervisor of VMware, Microsoft, or KVM.

As shown in the following networking diagram, Huawei's Agile Controller seamlessly works with the CE1800V and hardware switches, as well as other devices and systems. Through the standard OpenFlow/OVSDB protocol, network administrators can implement multiple functions such as delivering OpenFlow flow tables and guiding traffic forwarding, achieving separation of the control plane from the forwarding plane. In addition, through the VXLAN function, the CE1800V can shield differences among upper-layer hardware devices by working as a Network Virtual Endpoint (NVE), thus reducing the constraints on upper-layer device deployment and implementing multi-tenant migration on different platforms. Moreover, Huawei's eSight NMS can centrally manage and monitor the CE1800V and physical network devices (for example, CE series hardware switches).



Copyright © Huawei Technologies Co., Ltd. 2015. All rights reserved.

No part of this document may be reproduced or transmitted in any form or by any means without prior written consent of Huawei Technologies Co., Ltd.

Trademark Notice



, HUAWEI, and  are trademarks or registered trademarks of Huawei Technologies Co., Ltd.

Other trademarks, product, service and company names mentioned are the property of their respective owners.

General Disclaimer

The information in this document may contain predictive statements including, without limitation, statements regarding the future financial and operating results, future product portfolio, new technology, etc. There are a number of factors that could cause actual results and developments to differ materially from those expressed or implied in the predictive statements. Therefore, such information is provided for reference purpose only and constitutes neither an offer nor an acceptance. Huawei may change the information at any time without notice.

HUAWEI TECHNOLOGIES CO.,LTD.
Huawei Industrial Base
Bantian Longgang
Shenzhen 518129,P.R.China
Tel: +86 755 28780808

www.huawei.com